



**Nottinghamshire  
County Council**



**design  
services**



*The Turbine Innovation Centre cafe area*



*The Turbine Innovation Centre main entrance*



*Conference rooms*



The Turbine Innovation Centre in Worksop has sustainable credentials and was funded from multiple sources. This economic solution provides conference rooms, offices and a cafe.

## Design Services



Ashfield Area Offices main entrance

The proposed Nottinghamshire County Council Ashfield Area Offices.

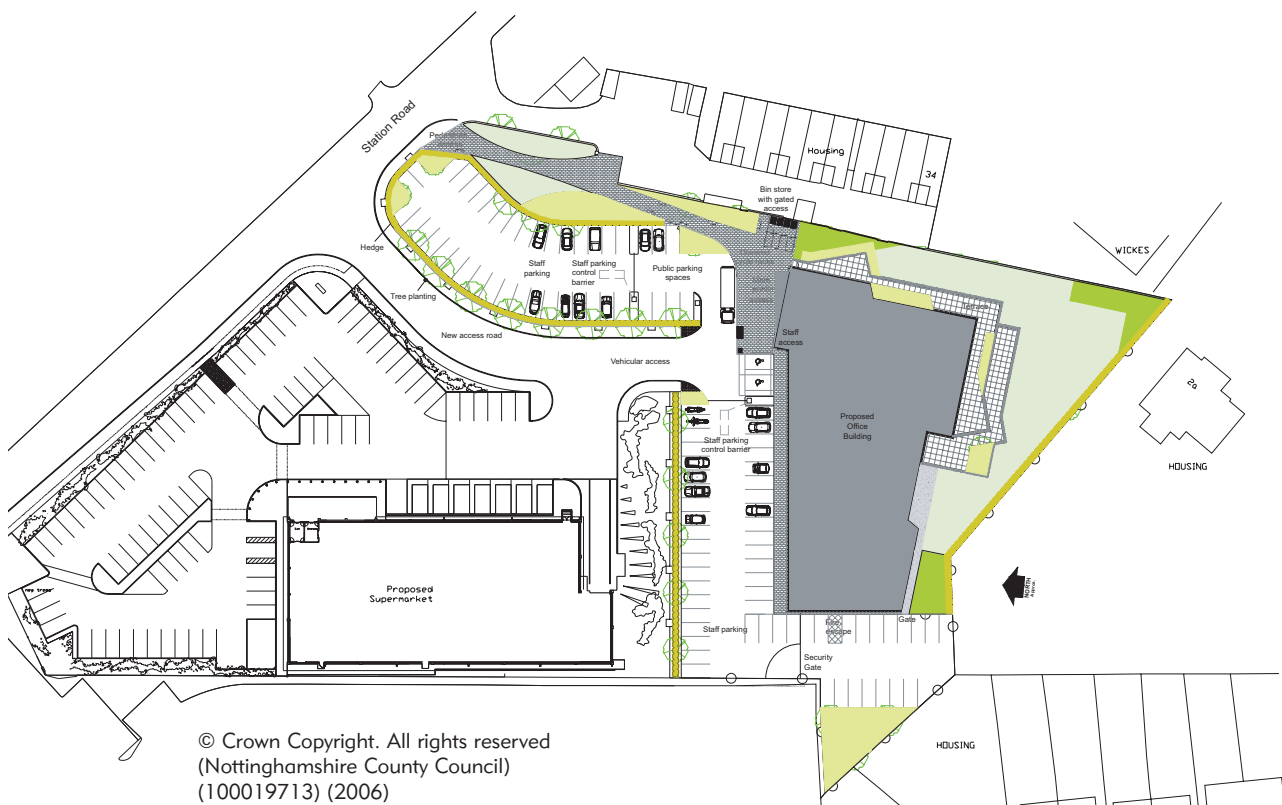
Nottinghamshire County Council's Design Services provides a complete service for the design, refurbishment and extensions of buildings. In addition to our Design Service we also manage the construction process delivering complete support, guidance and expertise from project inception right through to completion. We can also offer parts of the service as required.

We believe in working closely with our customers to ensure our designs meet their needs, delivering buildings that are value for money.

The design team maximise the advantages and benefits of embracing both the latest technology and construction thinking. We work with a framework of external consultants and contractors and we are developing a number of partnering arrangements to gain benefits from closer working relationships.

Our professional staff have extensive experience and design expertise. We have a successful track record in delivering public buildings that satisfy client and customer needs.

This document introduces our services and methods of work, with illustrations of recent projects.



© Crown Copyright. All rights reserved  
(Nottinghamshire County Council)  
(100019713) (2006)



Thrumpton Primary Hall

Thrumpton Primary is a unique and welcoming school with radial wings from a circular entrance providing easy access to all parts of the school. The new primary has improved results and behaviour and numbers on role have increased.



Thrumpton Primary Hall circular entrance



Thrumpton Primary main entrance

*"Thank you for the design of the new school, I like it because it is all very modern..."*

*We've got lots more space and we can all get in the hall...*

*When I wake up I look forward to coming to school. I feel happy... it is very modern... thank you*

Comments from the pupils at Thrumpton Primary



Thrumpton Primary IT suite

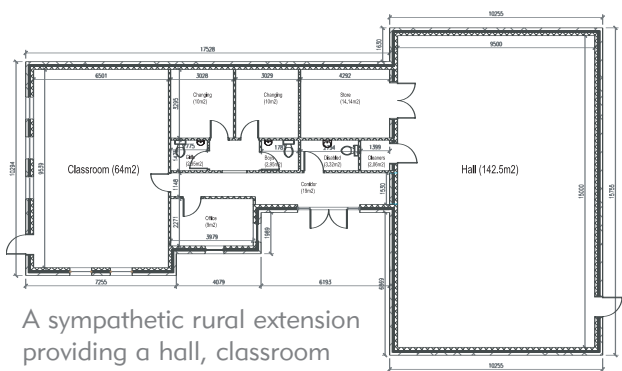
## Our Services

We offer a complete design and project management service that focuses on:

- working collaboratively
- working flexibly
- managing to agreed budget costs
- delivering value for money
- using our expertise in design and management to deliver customers needs.

Our comprehensive service includes the following disciplines:

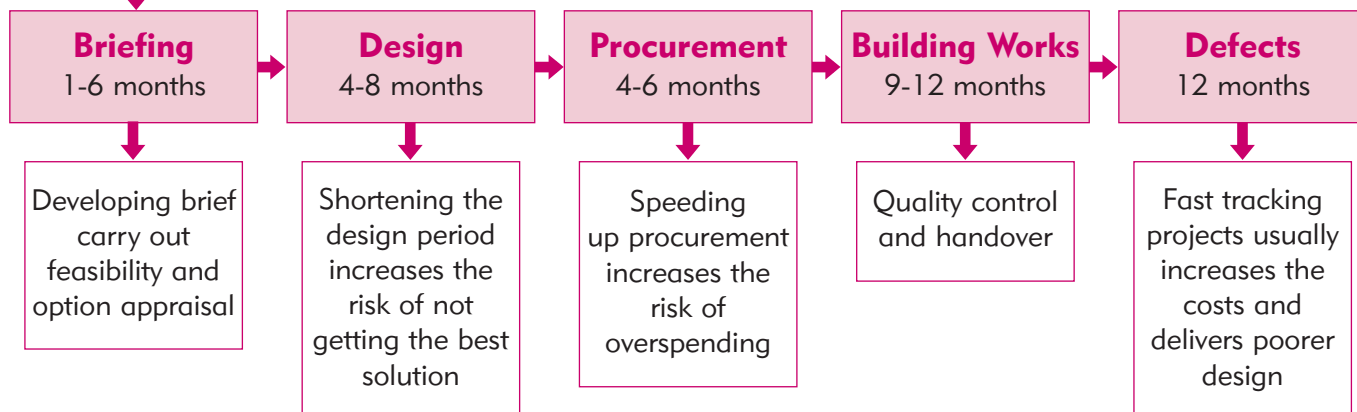
- Architects
- Electrical Engineers
- Mechanical Engineers
- Quantity Surveyors (costing)
- Structural Engineers
- Construction Health & Safety Advisor (CDM)
- Clerk of Works
- Space Planners
- Interior Designers
- Access Officer
- Landscape Designers



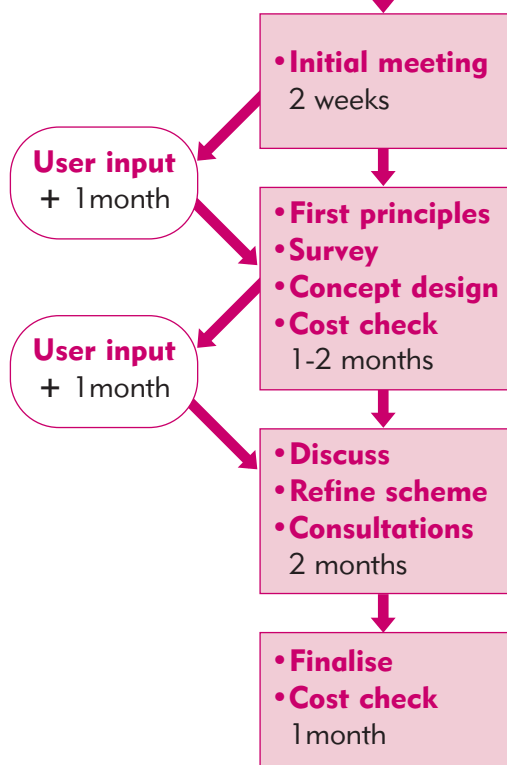
*"I couldn't be more delighted with the co-operation at all stages from planning through to handover and the standard of design and finish is first class"*

L J Beldham  
Headteacher Cuckney Primary School

# Building Process Overview

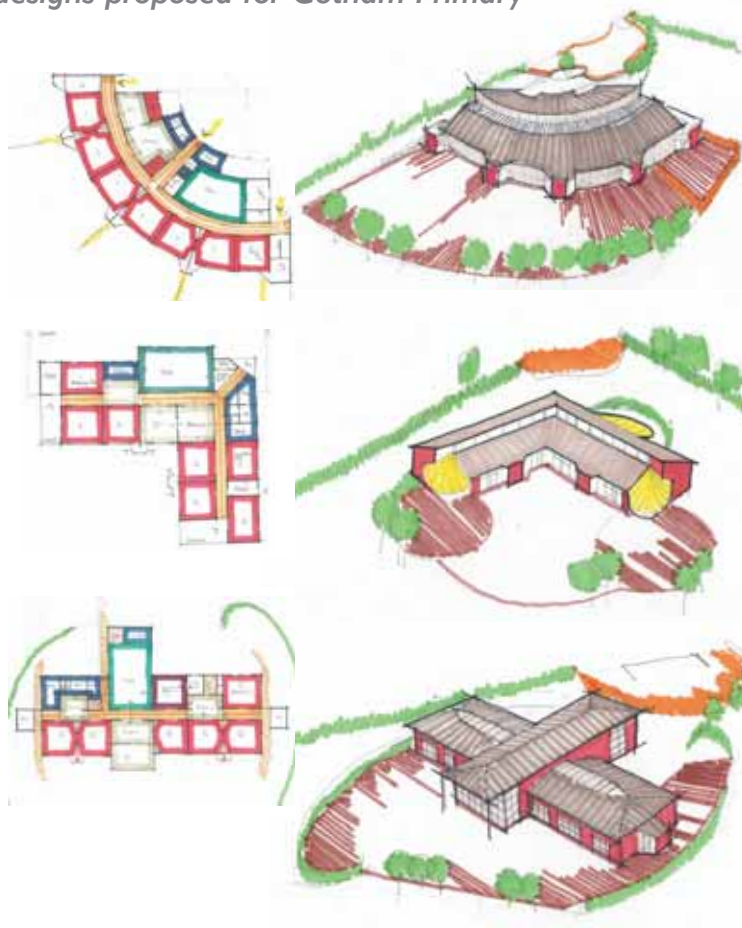


## Our Design Process



These timescales are indicative only

3 designs proposed for Gotham Primary



*“The staff really appreciated being listened to and seeing the design amended as a result of their comments”*

Chris Wheatley,  
Head of Cotgrave Candleby Lane Primary

## How we work

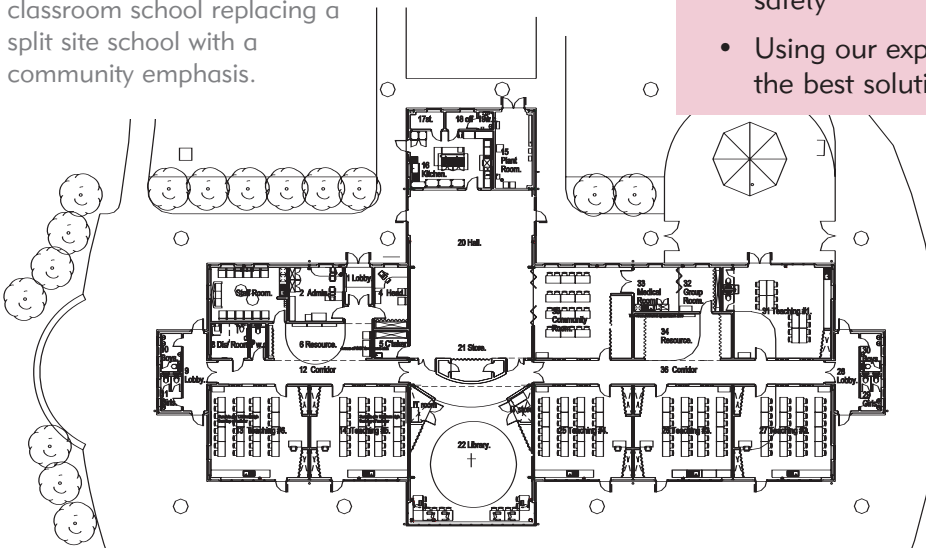
Key principles that are essential to good design:

- Develop the customer's brief and provide a solution that satisfies customer needs
- Consult with users and interested parties
- Identify the most appropriate method of delivering the project
- Deliver within the budget and programme constraints
- Provide an efficient value for money solution
- Recognise impacts on the environment
- Reduce costs of the building in use including maintenance and energy
- Minimise the impact of the construction process
- Manage the risks, including financial and safety
- Using our experience to identify and deliver the best solution

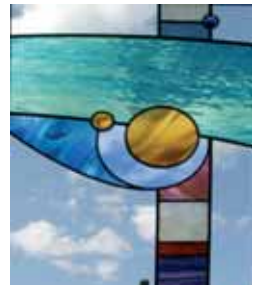


Gotham Primary resource area

Gotham Primary a new six classroom school replacing a split site school with a community emphasis.



Gotham Primary stained glass window detail



Gotham Primary exterior and playground



Bramley Centre



Bramley Centre Library



Bramley Centre

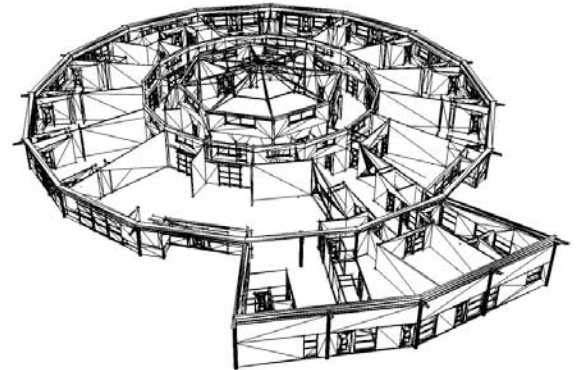
*"The Design Team helped us to create an attractive library in a building that was sympathetic to its surroundings"*

Bramley Centre, Southwell - providing a sensitive infill in a conservation area with a library, community centre and a cafe.

## Designs for an Autonomous Classroom

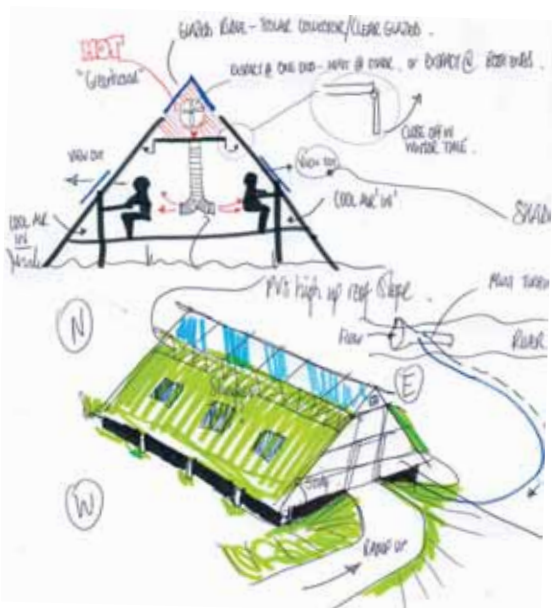


A feasibility for a completely self contained educational unit with no mains connection.



*"Never had such a unanimous "Ooooooh! I like that!" from all governors (and secretary) in my fifteen years of headship!"*

Kevin Eveleigh,  
Head of Barnby Road Primary



Barnby Road Primary during construction



## Innovation and Sustainability



Redlands Primary



Redlands Primary  
refurbished classroom

We are making a major contribution to the sustainability agenda by adopting a range of ideas including; rainwater harvesting; use of natural light and ventilation; wind and water turbines; photo voltaics; solar collectors; and highly efficient insulation materials.

### Redlands Innovation/Sustainability

- Rainwater harvesting for toilets
- 5Kw wind turbine
- Outside classrooms / gardens adjacent to classrooms
- External theatre space
- Controlled natural ventilation
- Passive solar gain / control
- Reuse of hundred year old building by refurbishment
- Regional table tennis centre allowing dual use of hall
- Sustainable Urban Drainage (SUDS)
- Project partnered with contractor

*"We are absolutely thrilled with our new building and site. We have fabulous rooms and spaces that are terrific for children to learn in and our staff to work in."*

Chris Honey,  
Head of Redlands Primary



Redlands Primary table  
tennis centre entrance

The Manor Sports Centre (Lottery funded), which is featured in DfES Schools for the Future 'Inspirational Design for PE and Sport Spaces' (2005).



The Manor Sports Centre

Proposed Retford bus station



Retford Bus Station



Mansfield Bus Station

Proposed Mansfield bus station and transport interchange



Morven Sports and Arts Centre

Lottery and DfES funded Sports and Arts Centres at five primaries in Nottinghamshire, our solution provided an external frame allowing the interior to be modelled to respond to local community needs.



## Contacting Design Services

To contact Design Services to discuss your new building needs or refurbishment of existing buildings please contact us on 0115 9773475 or e-mail us at [design@nottsc.gov.uk](mailto:design@nottsc.gov.uk)



*Joseph Whitaker School*

The Joseph Whitaker school new art and library/resources block, built to allow future flexibility with natural daylight and ventilation.



*John T Rice Sure Start*

The John T Rice Sure Start conversion transformed an existing building, into a colourful and well thought out early years solution.

Early proposals to seek Lottery funding for an eco-friendly Visitor Centre



*Concept sketches for Sherwood Visitor Centre bid*



### **Contacting us**

email **[design@nottscc.gov.uk](mailto:design@nottscc.gov.uk)**  
phone **0115 977 3475**  
fax **0115 977 2440**  
post **Design Services Floor 3, Trent Bridge House,  
Fox Road, West Bridgford, Nottingham NG2 6BJ**  
internet **[www.nottinghamshire.gov.uk](http://www.nottinghamshire.gov.uk)**  
published **April 2006**

ENV/PROP/04.06/01036 DP&P 4674

This information can be made available on request  
in alternative formats and languages

Photography and images: Martine Hamilton-Knight and Design Services